

Instructions for copying the files to MCT101/MCT202 (patch for HART 7 Command 0 Data length issue)

Document

Form: 34-ST-33-68
Effective: 12/05/11

Summary

This instruction will take you through the steps required to download a software patch that fixes the MC Toolkit-FDC issue with HART 7 devices that implement the HART Command 0 per the specification, **HCF_SPEC-127, Revision 7.0**. For HART 7 devices that implement the Command 0 per the specification, **HCF_SPEC-127, Revision 7.1** and above, you do not need this patch.

MC Toolkit Web download

File copy instructions are under “**Steps to load the files to MCT101/MCT202**”.

Note 1: The copied files will be used by the MC Toolkit-FDC program. You should have MC Toolkit Product Release 4.0 and above to use the FDC program.

To upgrade to MC Toolkit Release 4.0, go to the web site below:

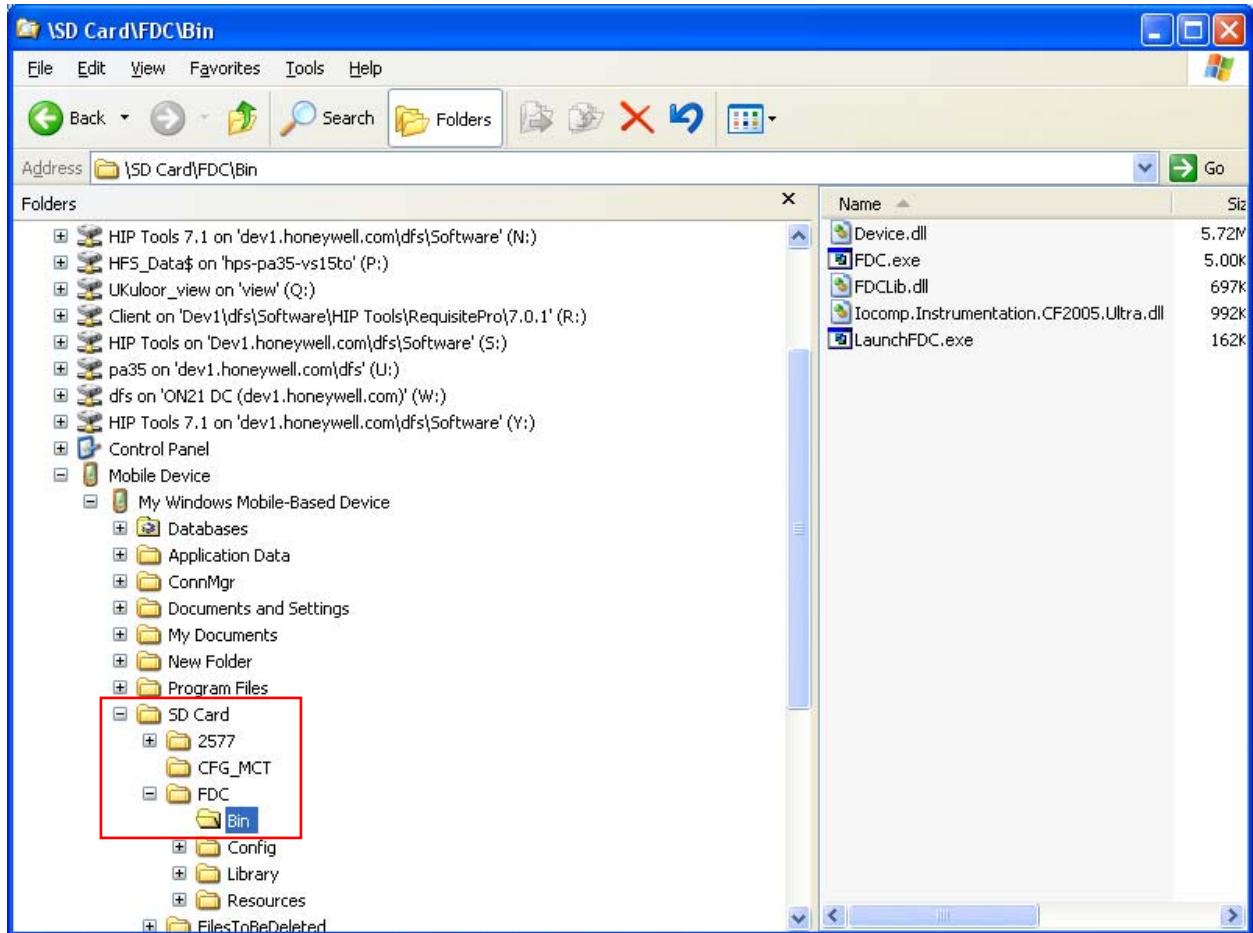
<http://hpsweb.honeywell.com/Cultures/en-US/Products/Instrumentation/configtools/mctoolkit/SoftwareDownloads/documents.htm>

Items to download:

1. **MC Toolkit Release 4 Patch** : This link contains **FDC_HART7Fix.zip** file
2. **34-ST-33-68** – Instructions to copy patch (This instruction sheet)

Steps to load the files to MCT101/MCT202

1. Download the files from the link MC Toolkit Release 4 Patch say **c:\MyFile**.
2. Unzip the **FDC_HART7Fix.zip** to get 2 files: **Device.dll** and **LaunchFDC.exe**
3. Setup Activesync connection with the MCT101, or MCT202 (Use the Free download software Microsoft ActiveSync version 4.0 or above)
4. Once the MCT202/MCT101 is connected to the PC, you should see the Mobile Device under your Windows Explorer
5. Browse to the **SD Card\FDC\Bin** folder on the Windows Explorer




6. Go to **C:\MyFile** folder where you saved the files (Step2)
7. Select the files and Right click, select **Copy**
8. Right click on the **SD Card\FDC\Bin** folder
9. Select Paste. Select **“Yes”** on the **“Confirm File Replace”** screen.
10. After the file copy is complete, disconnect the MCT202/MCT101 from the PC
11. MC Toolkit is ready to use. You can launch the FDC program by selecting **Start/FDC icon** on the MCT202/101.



12. On the “**Field Device Configurator**” home page, you can select “**Online Configuration**” and click Select. Similarly you can access the other icons on the Home page.



Note 2: Check the version of the FDC program by selecting the icon . The version should read **2.0.26.1**.