

CIMPLICITY® OpenProcess™

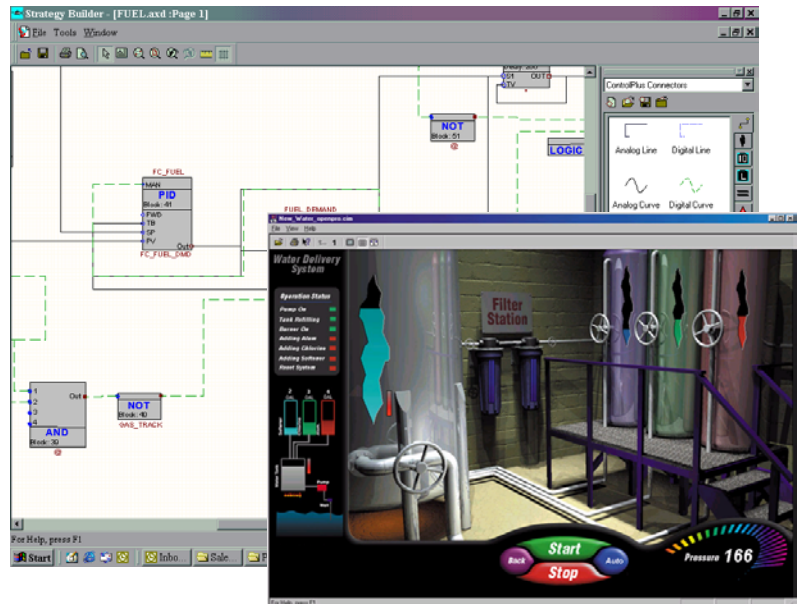
“Technical Datasheet”



GE Fanuc Automation

The Power of OpenProcess

Combining the most advanced software and hardware features, CIMPLICITY OpenProcess provides you with the tools you need to design, implement, document, and maintain a process control system using advanced control strategies and utilities typically associated with distributed control systems.



OpenProcess Product Features:

- Full DCS functionality
- Complete, proven library of function blocks
- Live data viewed on any drawing
- Function block connections maintained as function blocks are moved
- Function blocks are divided into functional catalogs for ease-of-use in finding and implementing
- On-line programming and troubleshooting
- Integrated database for control and operator interface
- Automatic PID faceplate with SmartObject™ technology
- Built-in simulator for control program testing
- Demo mode permits programming and testing using the simulator
- OpenProcess application is self documenting
- Complete feature set of advanced HMI functions
- Open architecture enables OpenProcess to seamlessly mesh with other systems
- Automatic pan and zooming
- Pre-compilation of drawings performed as function blocks are added, deleted, or edited.
- Support for template drawings makes re-using existing work a snap.
- Standard and custom report generation
- Robust error checking
- On-line help with examples
- Server redundancy and controller hot back-up
- Internet/Intranet connectivity with WebView
- Remote mobile application interface with Windows® CE-based PocketView
- Proven, reliable line of hardware with the Series 90™-30, Series 90-70, VersaMax®, Genius®, and Field Control™

Services and Support

OpenProcess leverages the combined resources and experience of GE Fanuc Automation, GE Industrial Systems and an extensive network of process-capable integrators to provide complete product and service solutions. We offer advanced technological and application experience worldwide in a variety of industries. Our knowledge base is complemented by reliable GE hardware and software product offerings that can control every part of your process from power delivery to manufacturing to shipping and finance.

A broad range of offerings:

- Application and Business Process knowledge
- System Integration
- Process Execution
- Proactive and Reactive Service
- Life Cycle Support
- Project Risk-Sharing
- ERP System Integration
- Six Sigma Quality
- Financing Services

Requirements & Ordering Information

<i>CIMPLICITY OpenProcess Hardware and Software Requirements</i>		
Hardware Requirements		
System Feature	Minimum	Recommended
• Processor	Pentium based 700MHz	Pentium 4, 1.5GHz
• RAM (MB)	256	512
• Disk requirements	At least 724MB required for installation	
• Networking	Ethernet, Novell, Token Ring, and TCP/IP	
Software Requirements		
• Operating System	Microsoft Windows 2000 Professional, Service Pack 2	
• Database options	Microsoft MSDE (installed with OpenProcess)	

- Please refer to GFA-??? for *OpenProcess* ordering information.
- Agency Approvals and Standards can be found in *GFK-1179, Installation Requirements for Conformance to Standards* available on our web site.
<http://www.gefanuc.com/infolink/manuals/gfk1179h.pdf>

©2002 GE Fanuc Automation North America, Inc. All rights reserved. CIMPLICITY, VersaMax and Genius are registered trademarks and OpenProcess, Series 90 and Field Control are trademarks of GE Fanuc Automation North America, Inc. Windows is a registered trademark of Microsoft Corporation. All other trademarks and registered trademarks are the property of their respective owners.



GE Fanuc Automation

GE Fanuc Automation Information Center

USA and Canada 1-800-648-2001
Europe and Middle East (352) 727979-1
Asia Pacific 65-566-4918

GFA-400
08/02